



# **Stratford-upon-Avon Neighbourhood Development Plan Referendum**

**Information for Voters and general information on  
Neighbourhood Development Plans**

## About this booklet

On 29<sup>th</sup> November 2018, there will be a referendum on a neighbourhood development plan (usually known as the Neighbourhood Plan) for your area. The Neighbourhood Plan has been produced by Stratford-upon-Avon Town Council as the 'Qualifying Body'. In this booklet you can find out about:

- The referendum and how you can take part;
- Where to find help in making your decision; and
- General information on Neighbourhood Plans and how they fit in to the 'Development Plan' for the whole of Stratford-on-Avon District

## Referendum on the Neighbourhood Plan

A referendum asks you to vote 'yes' or 'no' to a question. For this referendum you will receive a ballot paper with this question:

**"Do you want Stratford-on-Avon District Council to use the Neighbourhood Plan for Stratford-upon-Avon to help it decide planning applications in the neighbourhood area?"**

## How do I vote in the referendum?

You vote by putting a cross (X) in the 'Yes' or 'No' box on your ballot paper. Put a cross in only **one** box or your vote will not be counted.

If more people vote 'yes' than 'no' in this referendum, then Stratford-on-Avon District Council will use the Stratford-upon-Avon Neighbourhood Development Plan to help it decide planning applications in the Parish of Stratford-upon-Avon. The Neighbourhood Plan will then become part of the Development Plan for the District (see below).

If more people vote 'no' than 'yes', then planning applications will be decided without using the Neighbourhood Plan as part of the Development Plan for the local area.

## Can I vote?

You can vote in the referendum if:

- You are registered to vote in local council elections;
- The address at which you are registered to vote in a local council election, as shown in the register of electors, is in the Referendum Area (see map below) assuming that you are entitled to be registered at this address; and
- You are 18 years of age or over on 29<sup>th</sup> November 2018

You have to be registered to vote by 13<sup>th</sup> November 2018 to vote in the referendum. You can check if you are registered to vote by calling on telephone number (01789) 260208.

The referendum will be conducted based on procedures which are similar to those used at local government elections.

## Ways of Voting?

There are three ways of voting:

### 1. In person on 29<sup>th</sup> November 2018:

At your local polling station. It is easy and a member of staff will always help if you are not sure what to do. In the Stratford-upon-Avon neighbourhood area, the polling stations are as follows:

- Chaser Suite, Stratford-upon-Avon Racecourse, Luddington Road, Stratford-upon-Avon, CV37 9SE
- Rosebird Community Hall, Rosebird Centre, Shipston Road, Stratford-upon-Avon, CV37 8LU
- Shottery Memorial Hall, Hathaway Lane, Shottery, Stratford-upon-Avon, CV37 9BL
- St. Peter's Mission, Manor Road, Stratford-upon-Avon, CV37 7EA
- Stratford-upon-Avon Baptist Church, Church Office, Payton Street, Stratford-upon-Avon, CV37 6UA
- The Avenue Sports and Social Club, Avenue Farm Industrial Estate, Stratford-upon-Avon, CV37 0HR
- Bishopton Community Centre, Drayton Avenue, Stratford-upon-Avon, CV37 9PB
- The Council Chamber, Stratford-on-Avon District Council, Elizabeth House, Church Street, Stratford-upon-Avon, CV37 6HX
- The Ken Kennett Centre, Justins Avenue, Stratford-upon-Avon, CV37 0DA
- Tiddington Community Centre, Tiddington, Stratford-upon-Avon, CV37 7AY

You will receive a poll card confirming your polling station for this referendum. If you do not receive your poll card, you can contact our Helpline on (01789) 260208 or email us on [elections@stratford-dc.gov.uk](mailto:elections@stratford-dc.gov.uk) to find out where your polling station is. The Polling Station will be open from **7am to 10pm**.

### 2. By post:

- If you have a postal vote already, you will receive a poll card confirming this
- If you want to vote by post, you will need to complete an application form and send it to the Electoral Registration Officer to arrive by 5pm on 14<sup>th</sup> November 2018 at this address:

Stratford-on-Avon District Council  
Elizabeth House  
Church Street  
Stratford-upon-Avon  
CV37 6HX

- Postal votes can be sent overseas but you need to think about whether you will have time to receive and return your completed postal vote by 10pm on 29<sup>th</sup> November 2018.
- You should receive your postal vote about a week before polling day. If it doesn't arrive in time, you can ask for a replacement up to 5pm on 29<sup>th</sup> November 2018 by contacting our Helpline on (01789) 260208.

### 3. By proxy:

- If you have a proxy vote already, you will receive a poll card confirming this
- If you can't get to the polling station and don't wish to vote by post, you may be able to vote by proxy. This means allowing somebody that you trust to vote on your behalf
- To vote by proxy, you will need to complete an application form and send it to the Electoral Registration Officer to arrive by 5pm on 21<sup>st</sup> November 2018 at this address:

Stratford-on Avon District Council  
Elizabeth House  
Church Street  
Stratford-upon-Avon  
CV37 6HX

- When you apply for a proxy vote, you must say why you cannot vote in person
- Anyone can be your proxy as long as they are eligible to vote and are willing to vote on your behalf. You will have to tell them how you want to vote.
- Postal and proxy vote application forms are available from our Helpline on (01789) 260208 or by emailing [elections@stratford-dc.gov.uk](mailto:elections@stratford-dc.gov.uk)

## Am I registered to vote?

If you're not registered, you won't be able to vote. You can check if you are registered by calling our Helpline on (01789) 260208 or emailing [elections@stratford-dc.gov.uk](mailto:elections@stratford-dc.gov.uk)

If you are not registered to vote, you can register by going online at [www.gov.uk/register-to-vote](http://www.gov.uk/register-to-vote) The last date you can register for this referendum is 13<sup>th</sup> November 2018. If you are unable to register yourself online, please call the Helpline on (01789) 260208 and a member of staff will be able to do this for you. You will need to provide your date of birth and national insurance number when you register.

## Referendum expenses

Expenses can be incurred by an individual or body during the period of the referendum for referendum purposes only.

The Referendum expenses limit that will apply in relation to this Referendum is £3,666.67. The number of persons entitled to vote in the Referendum by reference to which the limit has been calculated is 22113.

## Specified documents

You are reading one of a number of documents (the Regulations call them 'specified documents') that will help you make a decision on how to vote. A copy of these specified documents may be inspected at:

- Stratford-on-Avon District Council Offices at Elizabeth House, Church Street, Stratford-upon-Avon, CV37 6HX. Normal opening hours are Monday – Wednesday 8.45am to 5.15pm and Thursday – Friday 8.45am to 5.00pm.
- Stratford-upon-Avon Library, 12 Henley Street, Stratford-upon-Avon, CV37 6PZ. Opening hours – Monday to Friday 9am to 5pm and Saturday 10.00am to 3.00pm
- Alcester Library, Globe House, Priory Road, Alcester, B49 5DZ. Opening hours – Monday and Wednesday to Friday 9.30am to 5.30pm and Saturday 10.00am to 4.00pm (limited service 1.00pm to 4.00pm on Saturday)
- Henley Community Library, The Old Schoolroom, Henley-in-Arden Methodist Church, 115 High Street, Henley-in-Arden, B95 5AU. Opening hours – Tuesday and Friday 9.00am to 5.00pm; Wednesday and Saturday 9.00am to 1.00pm
- Shipston-on-Stour Library, 12 Church Street, Shipston-on-Stour, CV36 4AP. Opening hours – Monday and Saturday 9.30am to 12.30pm; Tuesday and Thursday 9.30am to 12.30pm and 1.30pm to 5.30pm
- Southam Library, Tithe Place, High Street, Southam, CV37 0HB. Opening hours – Monday to Tuesday and Thursday to Friday 9.30am to 5.30pm; Saturday 9.30am to 12.30pm
- Wellesbourne Library, Kineton Road, Wellesbourne, CV35 9NF. Opening hours – Monday and Saturday 9.30am to 12.30pm; Wednesday and Friday 9.30am to 12.30pm and 1.30pm to 5.30pm
- Stratford-upon-Avon Town Council, Town Hall, Sheep Street, Stratford-upon-Avon, CV37 6EF. Opening hours – Monday to Friday 9.00am to 5.00pm

The 'specified documents' are:

- The Referendum version of the Stratford-upon-Avon Neighbourhood Development Plan;
- Report of the Independent Examiner;
- Summary of Submission Consultation Responses submitted to the Independent Examiner;
- Decision Statement by Stratford-on-Avon District Council that the Neighbourhood Plan meets the 'basic conditions' (see below). This also lists the all the Examiner's modifications to the Plan, whether or not the Council agrees with them and why they need to be made; and
- This *Information for Voters and General Information on Neighbourhood Plans* document

All the above documents can be viewed on Stratford on Avon District Council's website at [www.stratford.gov.uk/stratfordnp](http://www.stratford.gov.uk/stratfordnp)

## The 'Basic Conditions'

The Neighbourhood Plan must meet all the following conditions if it is to be considered for referendum:

- Has regard to national policy and guidance from the Secretary of State;
- The making of the Neighbourhood Plan contributes to the achievement of sustainable development;
- The making of the Neighbourhood Plan is in general conformity with the strategic policies contained within the development plan for the area;
- The making of the Neighbourhood Plan does not breach, or otherwise compatible with, European Union (EU) obligations (including the Strategic Environmental Assessment Directive 2001/42/EC);
- The making of the Neighbourhood Plan is not likely to have a significant effect on a European site (as defined in the Conservation of Habitats and Species Regulations 2010)

## How to find out more:

- You can find the specific documents on the Stratford-upon-Avon Neighbourhood Plan at [www.stratford.gov.uk/stratfordnp](http://www.stratford.gov.uk/stratfordnp)
- For more information about voting and the arrangements for this referendum, please contact our helpline on (01789) 260208 or [elections@stratford-dc.gov.uk](mailto:elections@stratford-dc.gov.uk)

## **What is Neighbourhood Planning?**

Neighbourhood planning aims to help local communities play a direct role in planning the areas in which they live and work.

Neighbourhood plans are prepared by Town or Parish Councils (or Neighbourhood Forums in locations where a Town or Parish Council does not exist) and are known as the 'Qualifying Body'.

The 'Qualifying Body' is responsible for preparing a Neighbourhood Plan and the Plan can show how the community wants land to be used and developed in its area. In this case the Qualifying Body is Stratford-upon-Avon Town Council.

## **What is a Neighbourhood area?**

A neighbourhood area can cover single streets or large urban or rural areas. The boundary of a neighbourhood area is put forward by the Qualifying Body when applying for the designation of a neighbourhood area. In this instance, the neighbourhood area is commensurate with the Parish boundary of Stratford-upon-Avon.

## **What is a Development Plan?**

In England, planning applications are determined by Local Planning Authorities in accordance with the Development Plan. A Development Plan is a suite of documents that set out the policies for the development and use of land across the entire Local Authority area. In Stratford-on-Avon District, the Development Plan currently consists of the Core Strategy (adopted July 2016) and the Minerals and Waste Local Plans produced by Warwickshire County Council.

All Neighbourhood Plans that pass the referendum are then 'made' (adopted) by the District Council and they will then also become part of the District's Development Plan.

## **Neighbourhood Planning in Stratford-upon-Avon Parish**

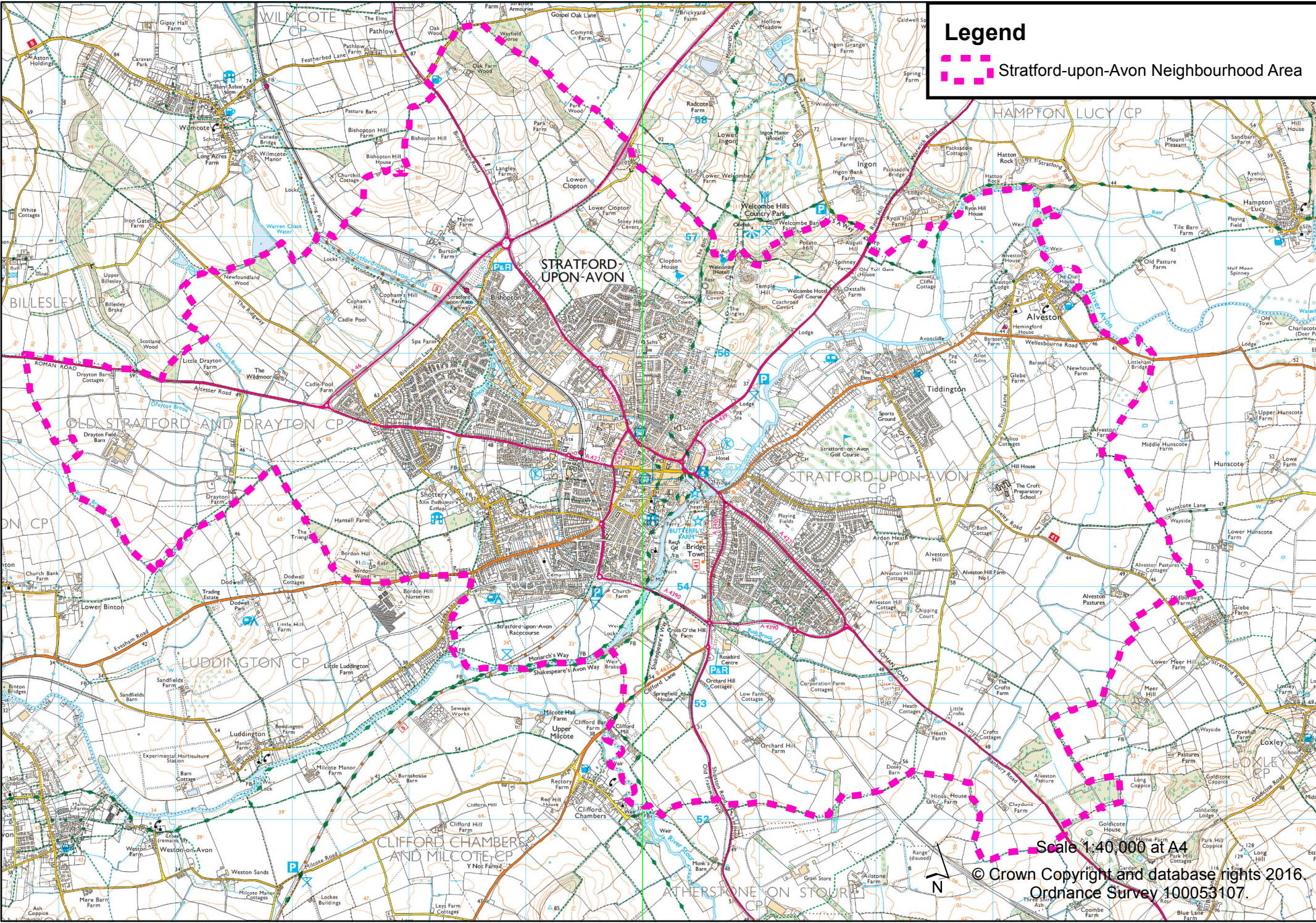
The Referendum area is identified on the map below as the Parish area of Stratford-upon-Avon and is identical to the area designated as the neighbourhood area.

For queries about Neighbourhood Planning in general, please contact Matthew Neal, Policy Planner, at [matthew.neal@stratford-dc.gov.uk](mailto:matthew.neal@stratford-dc.gov.uk) or telephone (01789) 260320.

18<sup>th</sup> October 2018

**Legend**

 Stratford-upon-Avon Neighbourhood Area



Scale 1:40,000 at A4

© Crown Copyright and database rights 2016  
Ordnance Survey 100053107.

